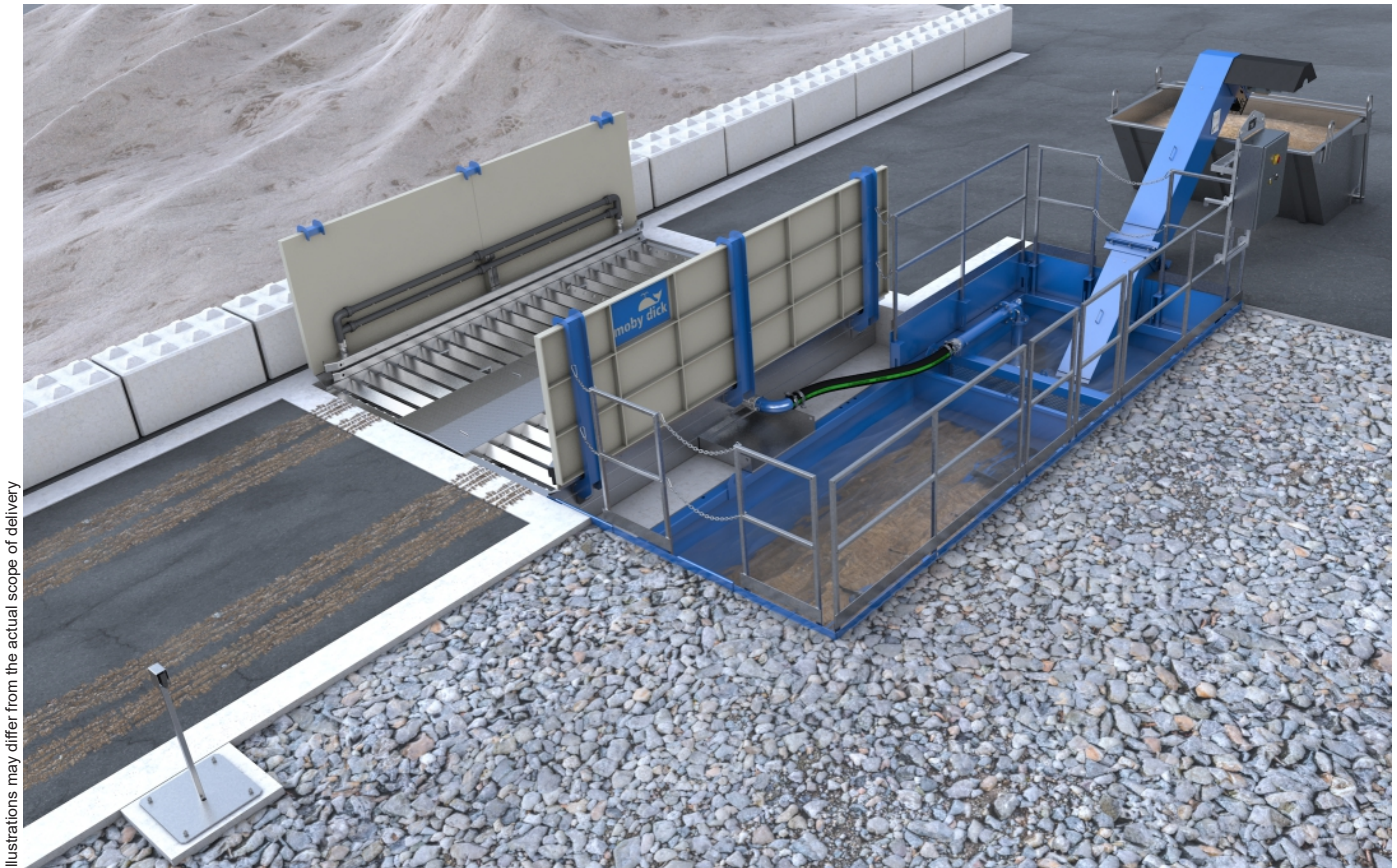


# Wheel washing system MobyDick Flex 400 C

Art. no. MDK-A300-400CP

Hot-dip galvanised, water-bearing wash unit with splash guard walls, recycling tank with scraper conveyor, pump technology, and a control system.



Illustrations may differ from the actual scope of delivery

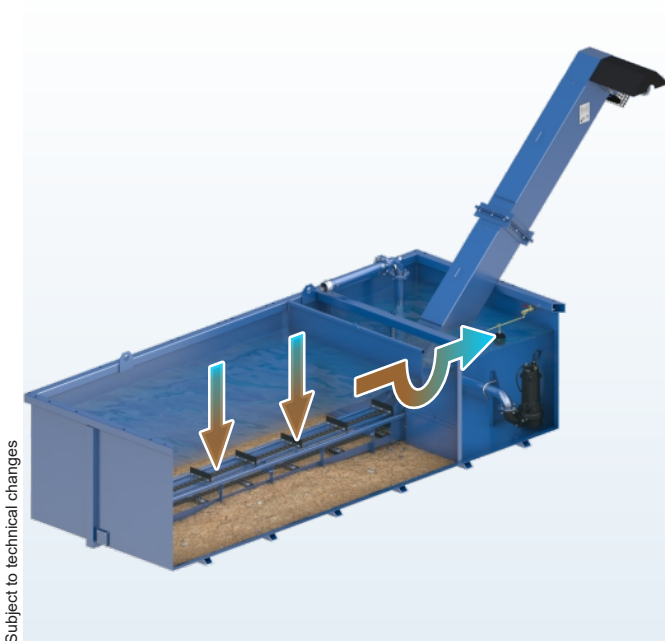
## Flex 400 C – A model from our Standard Line

Flex – The modular concept for the construction industry

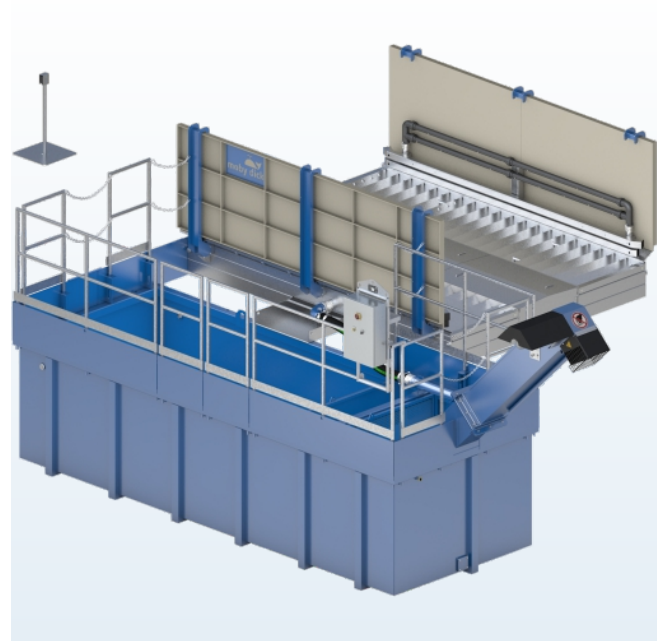
The wheel washing systems of the Flex series were developed by our engineers specifically for the needs of the construction industry. The basic unit of the modular concept consists of a robust four metre-long wash unit and a recycling tank. It can be combined with a scraper conveyor, a mobility package or a second basic unit to form eight different wheel washing systems that are four or eight metres in length. All models can be installed quickly and impress thousands of operators around the world.

## Function description

A truck drives slowly into the wheel washing system. The vehicle identification sensor automatically triggers the washing process. The specially coordinated nozzle system, consisting of a large number of bottom and side nozzles, then ensures the intensive cleaning of all tires and the entire chassis in one wheel rotation. Higher vehicle areas such as windows and rear-view mirrors are not washed, so as to leave the driver's field of vision clear. The kneading effect created by the angle profiles gives the tire treads additional cleaning. The duration of the washing process can be freely selected using the timer relay in the control cabinet, in accordance with the relevant operating conditions. The waste water runs via the return channel from the wash unit to the side recycling tank. This is where the washed-off solids settle out. The water is fed under a surge wall and over the partition wall with sieve insert into the pump chamber. There it is reused by the robust MobyPump immersion pump for further spraying. The scraper conveyor conveys settled solids out of the recycling tank. The scraper conveyor conveys settled solids out of the recycling tank.



Subject to technical changes



### Water recycling

In all MobyDick wheel washing systems the water is circulated in a closed circuit. Water treatment is via sedimentation in the recycling tank. Sedimentation can be accelerated by adding a flocculant. Settled solids are continuously conveyed out of the recycling tank by the scraper conveyor.

### Scope of supply

- Hot-dip galvanised, water-bearing wash unit
- Splash guard wall per side
- Double side nozzle bars per side
- Hot-dip galvanised return channel for the waste water
- Control cabinet
- Optical sensor to trigger the washing process
- 2 MobyPump immersion pumps
- Pump bracket and piping
- Recycling tank 20 C with scraper conveyor
- Edge elevation on recycling tank to end at ground level
- Safety railing
- Scraper conveyor access protection

### Specifications (Dimensions see layout)

• Drive-through length	400 cm
• Drive-through width	280 cm
• Maximum axle load	15.0 t
• Splash guard wall height	136 cm
• Nozzles	130 pcs
• Nozzle Ø	7 mm
• Recycling tank volume	20.0 m <sup>3</sup>
• Maximum pumping capacity	2x2.5 m <sup>3</sup> /min
• Electrical connection values	12 kW/30 A
• Sound emission	< 75 dB
• Weight (ready to ship)	6,500 kg

### Areas of application

The Flex 400 C model can wash up to 150 moderately soiled trucks per day.

Typical operation sites – depending on the number of trucks and degree of soiling – are

- Construction sites
- Gravel plants and quarries
- Concrete mixing plants
- Recycling facilities
- Landfills
- Port facilities
- Food industry
- Cleaning and disinfection
- Other areas on request