

Wheel washing system MobyDick Flex 800 B

Art. no. MDK-A300-800B

Two hot-dip galvanised, water-bearing wash units with splash guard walls, recycling tanks, pump technology, and a control system.



Illustrations may differ from the actual scope of delivery

Flex 800 B – A model from our Standard Line

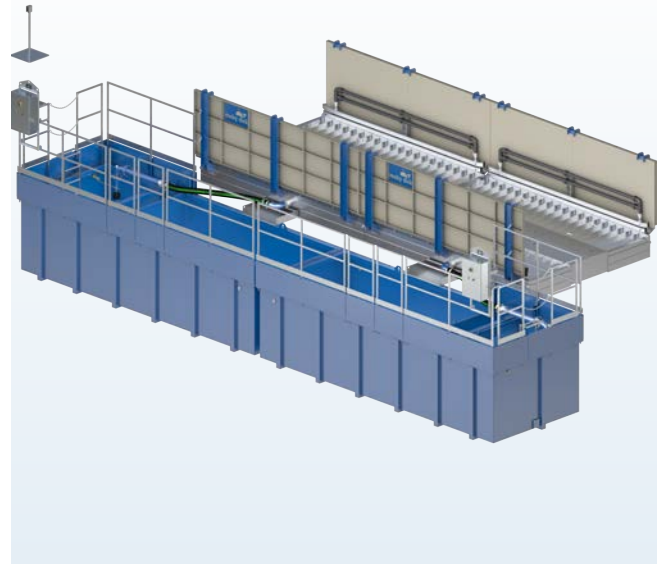
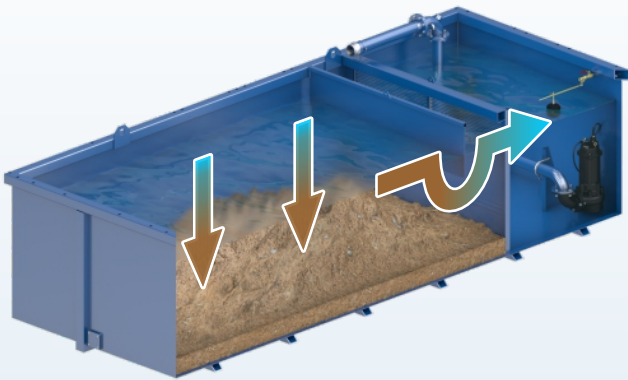
Flex – The modular concept for the construction industry

The wheel washing systems of the Flex series were developed by our engineers specifically for the needs of the construction industry. The basic unit of the modular concept consists of a robust four metre-long wash unit and a recycling tank. It can be combined with a scraper conveyor, a mobility package or a second basic unit to form eight different wheel washing systems that are four or eight metres in length. All models can be installed quickly and impress thousands of operators around the world.

Function description

A truck drives slowly into the wheel washing system. The vehicle identification sensor automatically triggers the washing process. The specially coordinated nozzle system, consisting of a large number of bottom and side nozzles, then ensures the intensive cleaning of all tires and the entire chassis in two wheel rotations. Higher vehicle areas such as windows and rear-view mirrors are not washed, so as to leave the driver's field of vision clear. The kneading effect created by the angle profiles gives the tire treads additional cleaning. The duration of the washing process can be freely selected using the timer relay in the control cabinet, in accordance with the relevant operating conditions. The waste water runs via the return channels from the wash units to the recycling tanks on the side. This is where the washed-off solids settle out. The water is fed under a surge wall and over the partition wall with sieve insert into the pump chamber. There it is reused by the robust MobyPump immersion pump for further spraying. An excavator or suction vehicle removes the settled solids from the recycling tanks.

Subject to technical changes



Water recycling

In all MobyDick wheel washing systems the water is circulated in a closed circuit. Water treatment is via sedimentation in the recycling tank. Sedimentation can be accelerated by adding a flocculant. The solids that settle out in the recycling tank should be extracted with an excavator or suctioned out with a suction vehicle at regular intervals (depending on how frequently the system is used).

Specifications (Dimensions see layout)

• Drive-through length	800 cm
• Drive-through width	280 cm
• Maximum axle load	15.0 t
• Splash guard wall height	136 cm
• Nozzles	2×130 pcs
• Nozzle Ø	7 mm
• Recycling tank volume	2×20.0 m ³
• Maximum pumping capacity	4×2.5 m ³ /min
• Electrical connection values	23 kW/60 A
• Sound emission	< 75 dB
• Weight (ready to ship)	11,500 kg

Scope of supply

- 2×1 hot-dip galvanised, water-bearing wash unit
- Splash guard wall per side
- 2×1 double side nozzle bars per side
- 2×1 hot-dip galvanised return channel for the waste water
- 2×1 control cabinet with connection cable
- Optical sensor to trigger the washing process
- 2×2 MobyPump immersion pumps
- Pump bracket and piping
- 2×1 recycling tank 20 B with entry ladder
- Edge elevation on recycling tanks to end at ground level
- Safety railing

Areas of application

The Flex 800 B model can wash up to 200 moderately soiled trucks per day.

Typical operation sites – depending on the number of trucks and degree of soiling – are

- Construction sites
- Gravel plants and quarries
- Concrete mixing plants
- Recycling facilities
- Landfills
- Port facilities
- Food industry
- Cleaning and disinfection
- Other areas on request