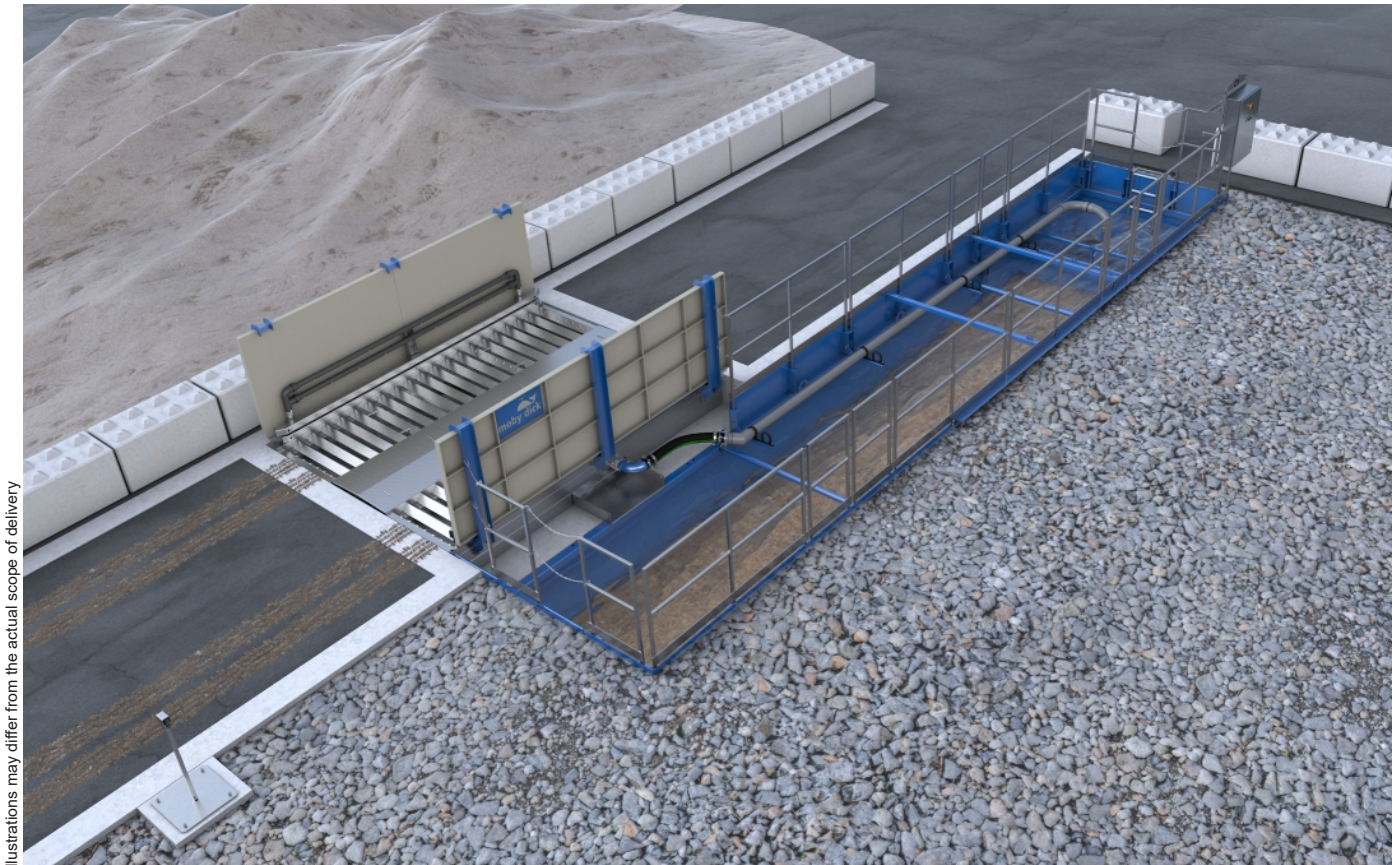


Wheel washing system MobyDick Plus 400 B-50P

Art. no. MDC-100-001-1

Hot-dip galvanized, water-bearing wash unit with splash guard walls, recycling tank, pump technology, and a control system.



Illustrations may differ from the actual scope of delivery

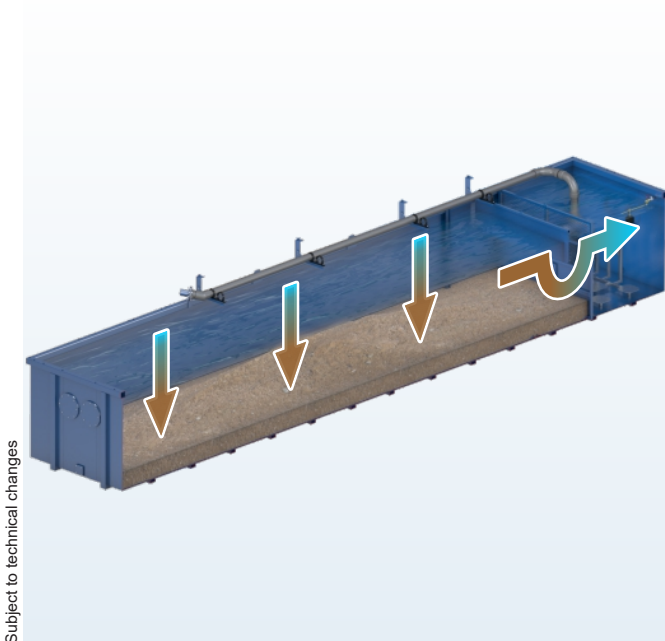
Plus 400 B-50P – A model from our Standard Line

Plus - Greater performance for high demands

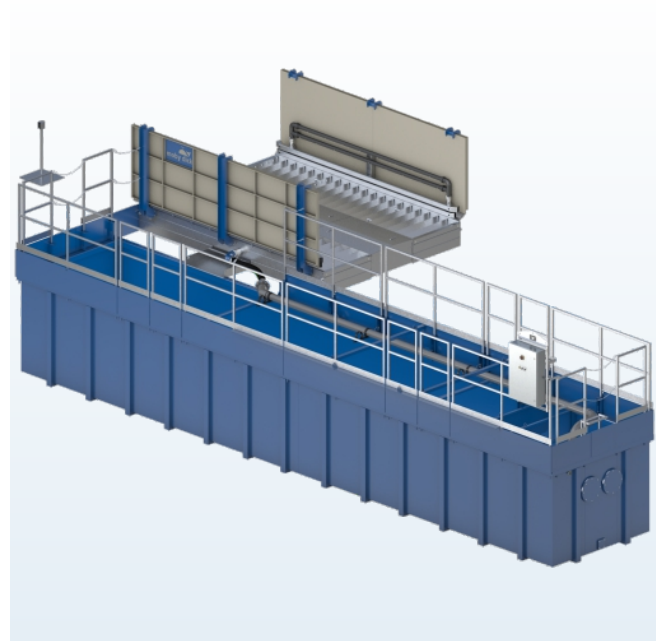
The Standard Line Plus series consists of a large selection of mobile and stationary wheel washing systems that are particularly suitable for use with high truck drive-through frequencies. These modern drive-through systems are based on more than 30 years of experience with wheel washing systems and, in addition to the classic MobyDick advantages, also offer a large choice of options and an attractive price/performance ratio. All Plus systems are quick and easy to install and require only minimal maintenance.

Function description

A truck drives slowly into the wheel washing system. The vehicle identification sensor automatically triggers the washing process. The specially coordinated nozzle system, consisting of a large number of bottom and side nozzles, then ensures the intensive cleaning of all tires and the entire chassis in one wheel rotation. Higher vehicle areas such as windows and rear-view mirrors are not washed, to leave the driver's field of vision clear. The kneading effect created by the angle profiles gives the tire treads additional cleaning. The duration of the washing process can be freely selected using the timer relay in the control cabinet, in accordance with the relevant operating conditions. The waste water runs via the return channel from the wash unit to the side recycling tank. This is where the washed-off solids settle out. The water is fed under a surge wall and over the partition wall with sieve insert into the pump chamber. There it is reused by a robust MobyPump immersion pump for further spraying. An excavator or suction vehicle removes the settled solids from the recycling tank.



Subject to technical changes



Water recycling

In all MobyDick wheel washing systems the water is circulated in a closed circuit. Water treatment is via sedimentation in the recycling tank. Sedimentation can be accelerated by adding a flocculant. The solids that settle out in the recycling tank should be extracted with an excavator or suctioned out with a suction vehicle at regular intervals (depending on how frequently the system is used).

Specifications (Dimensions see layout)

• Drive-through length	157 in
• Drive-through width	110 in
• Maximum axle load	16.5 tons
• Splash guard wall height	54 in
• Nozzles	130 pcs.
• Nozzle Ø	0.3 in
• Recycling tank volume	13,200 gal
• Maximum pumping capacity	2×660 gal/min
• Electrical connection values	16 HP/30 A
• Sound emission	< 75 dB
• Weight (ready to ship)	17,650 lbs

Scope of supply

- Hot-dip galvanized, water-bearing wash unit
- Splash guard wall per side
- Double side nozzle bars per side
- Hot-dip galvanized return channel for the waste water
- Control cabinet
- Optical sensor to trigger the washing process
- 2 MobyPump immersion pumps
- Pump bracket and piping
- Recycling tank 50 B with entry ladder
- Edge elevation on recycling tank to end at ground level
- Safety railing and link chains

Fields of application

The Plus 400 B-50P model can wash up to 250 moderately soiled trucks per day.

Typical operation sites – depending on the number of trucks and degree of soiling – are

- Construction sites
- Gravel plants and quarries
- Concrete mixing plants
- Recycling facilities
- Landfill sites
- Port facilities
- Food industry
- Cleaning and disinfection
- Other areas on request