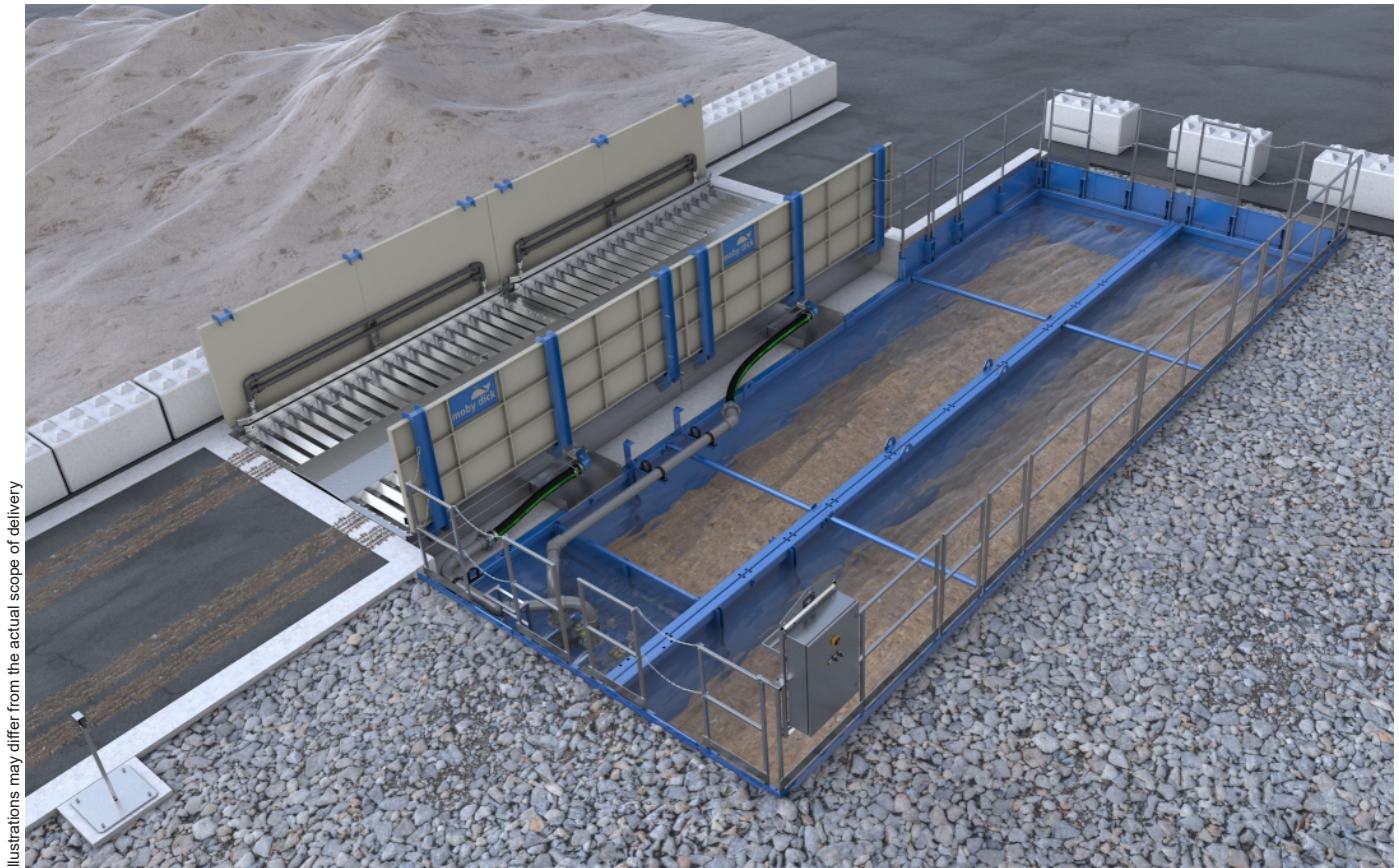


# Wheel washing system MobyDick Plus 800 B-100P

Art. no. MDC-100-008-1

Hot-dip galvanised, water-bearing wash unit with splash guard walls, recycling tank, pump technology, and a control system.



Illustrations may differ from the actual scope of delivery

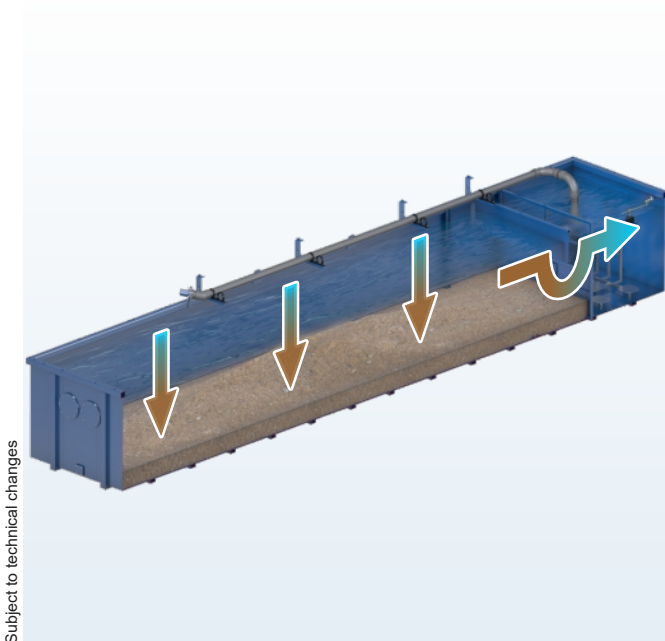
## Plus 800 B-100P – A model from our Standard Line

Plus - Greater performance for high demands

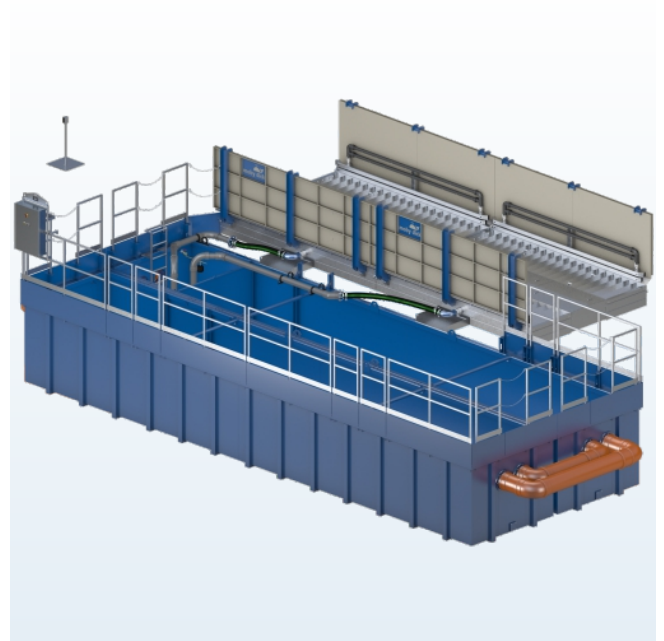
The Standard Line Plus series consists of a large selection of mobile and stationary wheel washing systems that are particularly suitable for use with high truck drive-through frequencies. These modern drive-through systems are based on more than 30 years of experience with wheel washing systems and, in addition to the classic MobyDick advantages, also offer a large choice of options and an attractive price/performance ratio. All Plus systems are quick and easy to install and require only minimal maintenance.

### Function description

A truck drives slowly into the wheel washing system. The vehicle identification sensor automatically triggers the washing process. The specially coordinated nozzle system, consisting of a large number of bottom and side nozzles, then ensures the intensive cleaning of all tires and the entire chassis in two wheel rotations. Higher vehicle areas such as windows and rear-view mirrors are not washed, so as to leave the driver's field of vision clear. The kneading effect created by the angle profiles gives the tire treads additional cleaning. The duration of the washing process can be freely selected using the timer relay in the control cabinet, in accordance with the relevant operating conditions. The waste water runs via the return channels from the wash units to the recycling tanks on the side. This is where the washed-off solids settle out. The water is fed under a surge wall and over the partition wall with sieve insert into the pump chamber. There it is reused by the robust MobyPump immersion pump for further spraying. An excavator or suction vehicle removes the settled solids from the recycling tanks.



Subject to technical changes



## Water recycling

In all MobyDick wheel washing systems the water is circulated in a closed circuit. Water treatment is via sedimentation in the recycling tank. Sedimentation can be accelerated by adding a flocculant. The solids that settle out in the recycling tank should be extracted with an excavator or suctioned out with a suction vehicle at regular intervals (depending on how frequently the system is used).

## Specifications (Dimensions see layout)

• Drive-through length	2×400 cm
• Drive-through width	280 cm
• Maximum axle load	15.0 t
• Splash guard wall height	136 cm
• Nozzles	260 pcs.
• Nozzle Ø	7 mm
• Recycling tank volume	2×50.0 m <sup>3</sup>
• Maximum pumping capacity	4×2.5 m <sup>3</sup> /min
• Electrical connection values	23 kW/55 A
• Sound emission	< 75 dB
• Weight (ready to ship)	16,000 kg

## Scope of supply

- 2 hot-dip galvanised, water-bearing wash units
- Splash guard wall per side
- Double side nozzle bars per side
- Hot-dip galvanised return channel / wash unit for the waste water
- Control cabinet
- Optical sensor to trigger the washing process
- 4 MobyPump immersion pumps
- Pump bracket and piping
- 2 recycling tanks 50 B with entry ladder
- Edge elevation on recycling tank to end at ground level
- Safety railing and link chains

## Areas of application

The Plus 800 B-100P model can wash 300 to 350 highly soiled trucks per day.

Typical operation sites – depending on the number of trucks and degree of soiling – are

- Construction sites
- Gravel plants and quarries
- Concrete mixing plants
- Recycling facilities
- Landfill sites
- Port facilities
- Food industry
- Cleaning and disinfection
- Other areas on request