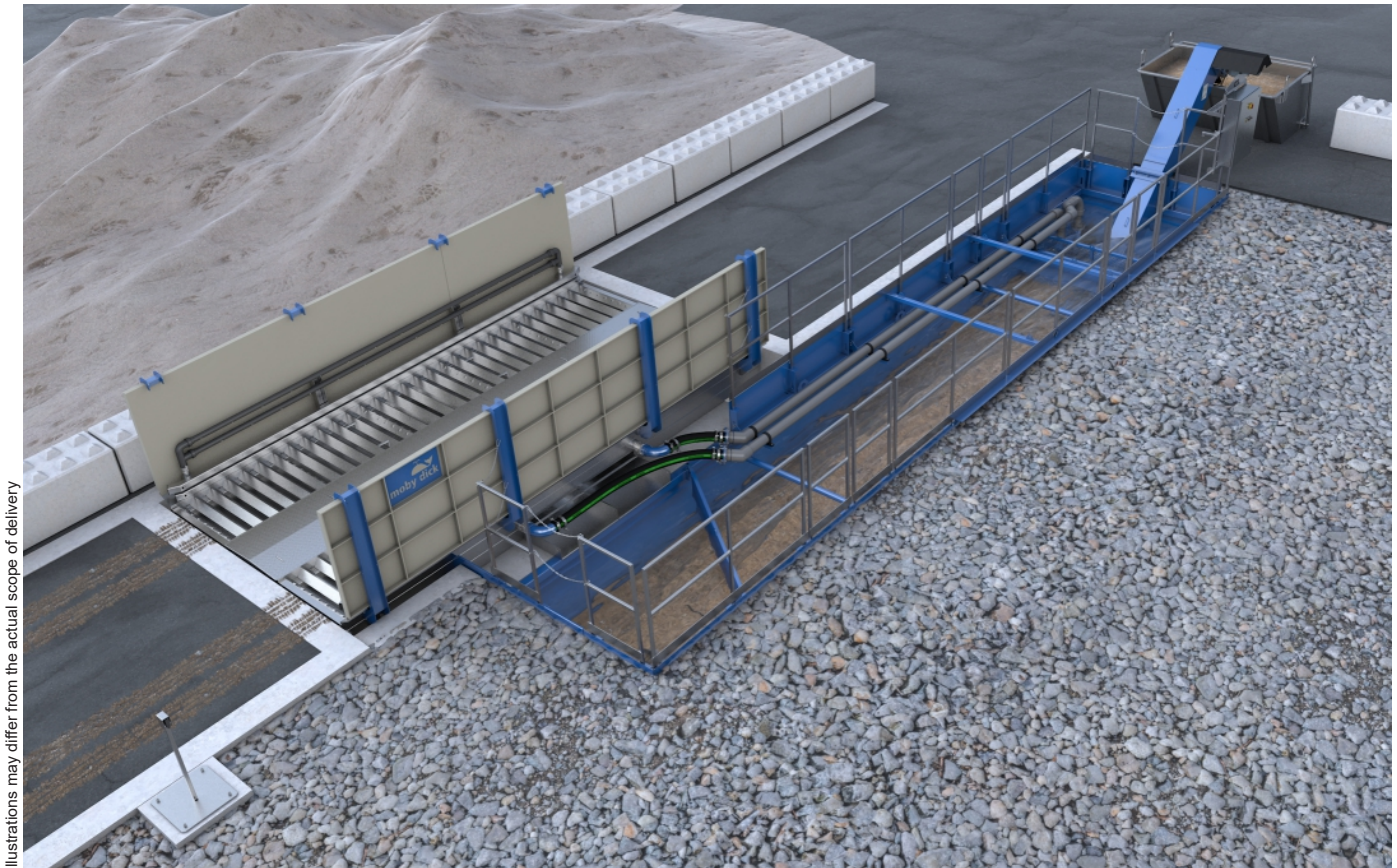


Wheel washing system MobyDick Plus 600 C-50P

Art. no. MDC-100-014-1

Hot-dip galvanised, water-bearing wash unit with splash guard walls, recycling tank with scraper conveyor, pump technology, and a control system.



Illustrations may differ from the actual scope of delivery

Plus 600 C-50P – A model from our Standard Line

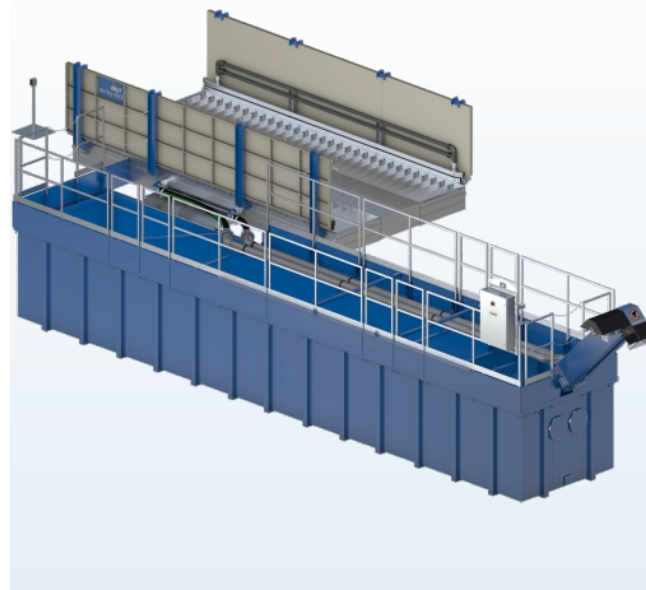
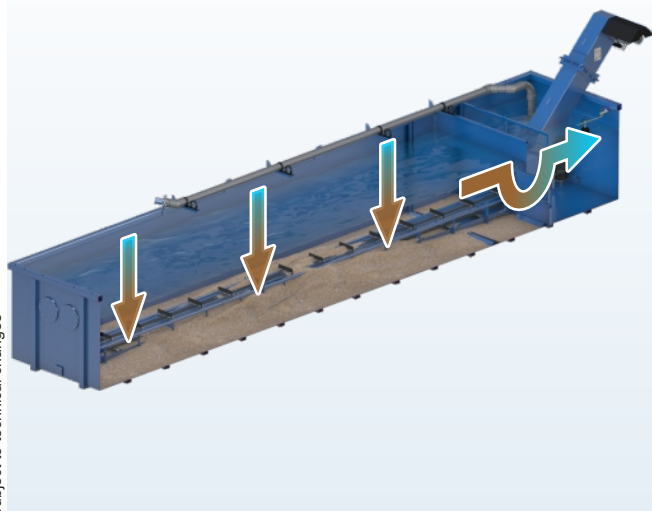
Plus - Greater performance for high demands

The Standard Line Plus series consists of a large selection of mobile and stationary wheel washing systems that are particularly suitable for use with high truck drive-through frequencies. These modern drive-through systems are based on more than 30 years of experience with wheel washing systems and, in addition to the classic MobyDick advantages, also offer a large choice of options and an attractive price/performance ratio. All Plus systems are quick and easy to install and require only minimal maintenance.

Function description

A truck drives slowly into the wheel washing system. The vehicle identification sensor automatically triggers the washing process. The specially coordinated nozzle system, consisting of a large number of bottom and side nozzles, then ensures the intensive cleaning of all tires and the entire chassis in just over one wheel rotation. Higher vehicle areas such as windows and rear-view mirrors are not washed, so as to leave the driver's field of vision clear. The kneading effect created by the angle profiles gives the tire treads additional cleaning. The duration of the washing process can be freely selected using the timer relay in the control cabinet, in accordance with the relevant operating conditions. The waste water runs via the return channel from the wash unit to the side recycling tank. This is where the washed-off solids settle out. The water is fed via the partition wall with sieve insert into the pump chamber. There it is reused by the robust MobyPump immersion pump for further spraying. The scraper conveyor conveys settled solids out of the recycling tank.

Subject to technical changes



Water recycling

In all MobyDick wheel washing systems the water is circulated in a closed circuit. Water treatment is via sedimentation in the recycling tank. Sedimentation can be accelerated by adding a flocculant. Settled solids are continuously conveyed out of the recycling tank on the scraper conveyor.

Scope of supply

- Hot-dip galvanised, water-bearing wash unit
- Splash guard wall per side
- Double side nozzle bars per side
- 2 hot-dip galvanised return channels for the waste water
- Control cabinet
- Optical sensor to trigger the washing process
- 3 MobyPump immersion pumps
- Pump bracket and piping
- Recycling tank 50 C with scraper conveyor
- Edge elevation on recycling tank to end at ground level
- Safety railing and link chains
- Scraper conveyor access protection

Specifications (Dimensions see layout)

• Drive-through length	600 cm
• Drive-through width	280 cm
• Maximum axle load	15.0 t
• Splash guard wall height	136 cm
• Nozzles	226 pcs.
• Nozzle Ø	7 mm
• Recycling tank volume	50.0 m ³
• Maximum pumping capacity	3×2.5 m ³ /min
• Electrical connection values	17.5 kW/40 A
• Sound emission	< 75 dB
• Weight (ready to ship)	11,000 kg

Areas of application

The Plus 600 C-50P model can wash up to 250 moderately soiled trucks per day.

Typical operation sites – depending on the number of trucks and degree of soiling – are

- Construction sites
- Gravel plants and quarries
- Concrete mixing plants
- Recycling facilities
- Landfill sites
- Port facilities
- Food industry
- Cleaning and disinfection
- Other areas on request